

HIGH-S-LIGHT 1200 BOOST *with automatic SHUTTER-SYSTEM*

Due to the use of modern techniques the system offers:

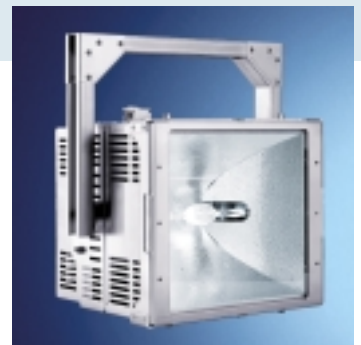
- Low heatload on test sample
- High luminous efficiency of $> 91 \text{ lm / W}$
- Daylight colour temperature of 6.000 K
- Flicker-free light, modulation $\pm 4 \%$
- High illuminance due to the BOOST-system
- Stabilized power output, even when mains varies

The HIGH-S-LIGHT 1200 BOOST system with automatic shutter is designed especially for applications, in which the heat load of test samples has to be avoided.

Specifications for airbag tests require nowadays tests in temperature ranges down to $-35 \text{ }^\circ\text{C}$.

Due to the fact that the illumination usually applied for High-Speed-Photography would heat the specimen within a short period of time, HIGH-S-LIGHT 1200 BOOST with automatic shutter has been designed for High-Speed-Photography in low temperature ranges.

The application of the HIGH-S-LIGHT standard system offers by its Standby and BOOST modes the possibility of keeping the heat development low, however not low enough for tests demanding an adherence to very low temperature ($-35 \text{ }^\circ\text{C}$). With the development of the new HIGH-S-LIGHT system it is now possible to meet also this kind of test demand.



khs

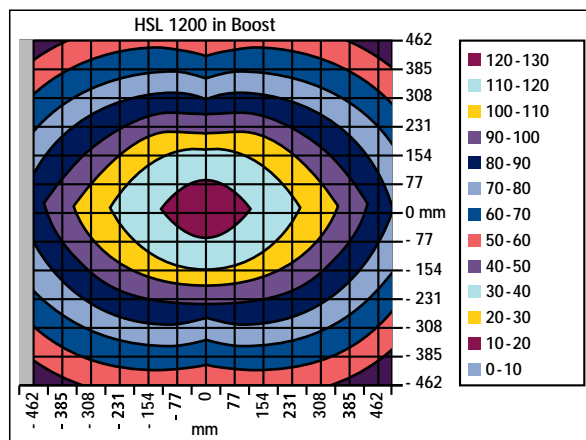
K. H. Steuernagel Lichttechnik GmbH



The essential components of the system are the luminaire, the electronic power supply, the EPS module and the control system. Additionally, to meet the new requirements, this system can be equipped with a shutter system to cover the luminaire, as well as the temperature kit to meet the low temperature requirements.

Available as single or multiple EPS system with options as:

- Automatic shutter
- Remote control
- Wide range temperature kit (-50 °C ... +100 °C)
- Test area switchover



Intensity distribution in kLux at a distance of 1 m

khs

K. H. Steuernagel Lichttechnik GmbH

Gerauer Straße 56a
64546 Mörfelden-Walldorf
Germany

Phone: +49-61 05-91 28 6
Fax: +49-61 05-91 28 80

www.khslight.com

Technical Information

Lamp	MHG 1200 W
Colour temperature	6.000 K
Illuminance	125.000 Lux
Average lifetime of the lamp	1.000 h / 1.500 starts
Dimensions	300 x 370 x 290 mm (W x H x D)
Weight	6 kg

Technical Information

Power supply	1200 W BOOST
Mains	230 V / 1 Ph / N / PE
Operating conditions	0 to 35 °C
Protective measures	open circuit control over temperature protection
Output power	1200 / 2400 W
Shape of curve	square-wave, bipolar
Light modulation	+/- 4 %
Efficiency	ca. 90 %
Weight	9 kg